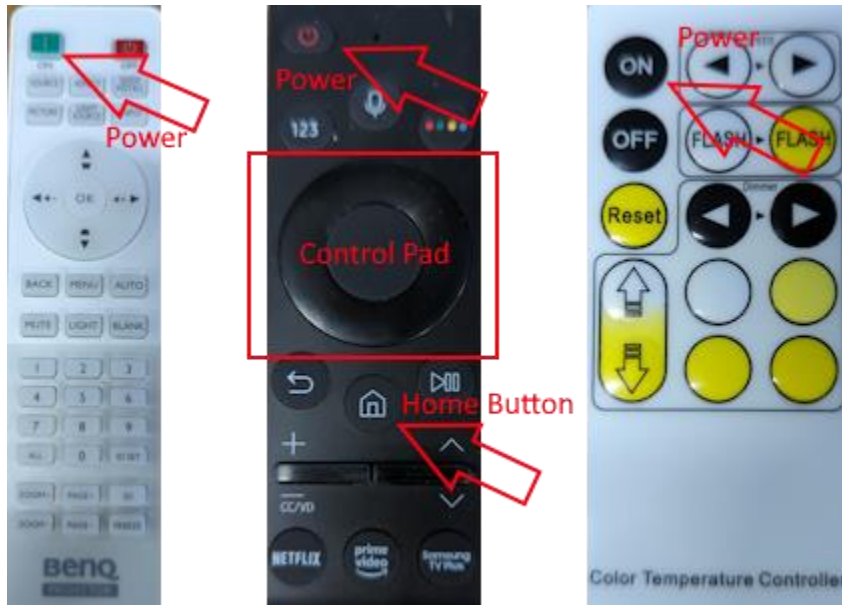


This is the procedure to prepare the simulator for Driving Range only. If you want to play a round of golf, please see the Round of Golf Setup page.

Power up the devices



Power on the Projector, Side TV, and Hitting Zone Spotlight. Point the appropriate remote at each device and press the "power" or "on" button. The Projector and Spotlight are located at the top of the Sim enclosure at the back.



From left to right – Projector, TV, Spotlight

The projector boot up time is around a minute or so. So don't panic if it doesn't come on immediately. While it's coming on, power on the PC. It is on a stand next to the Side TV.

Next, make sure the Side TV is on the correct input.

- Press the HOME button  on the TV remote. It looks like a house.
- Press LEFT on the circular control pad on the TV Remote until you get to the input source selection option.  This option looks like a rectangle with an arrow pointing into it.
- Press the middle of the circular control pad to select the input source selection option.
- Move the selection to the PC input and press the middle of the circular pad on the remote to select the PC Input.

After the Projector, Side TV and PC are on, the computer desktop logon screen should be displaying on the Projector Screen. If it is not, check if it's on the Side TV. This may mean

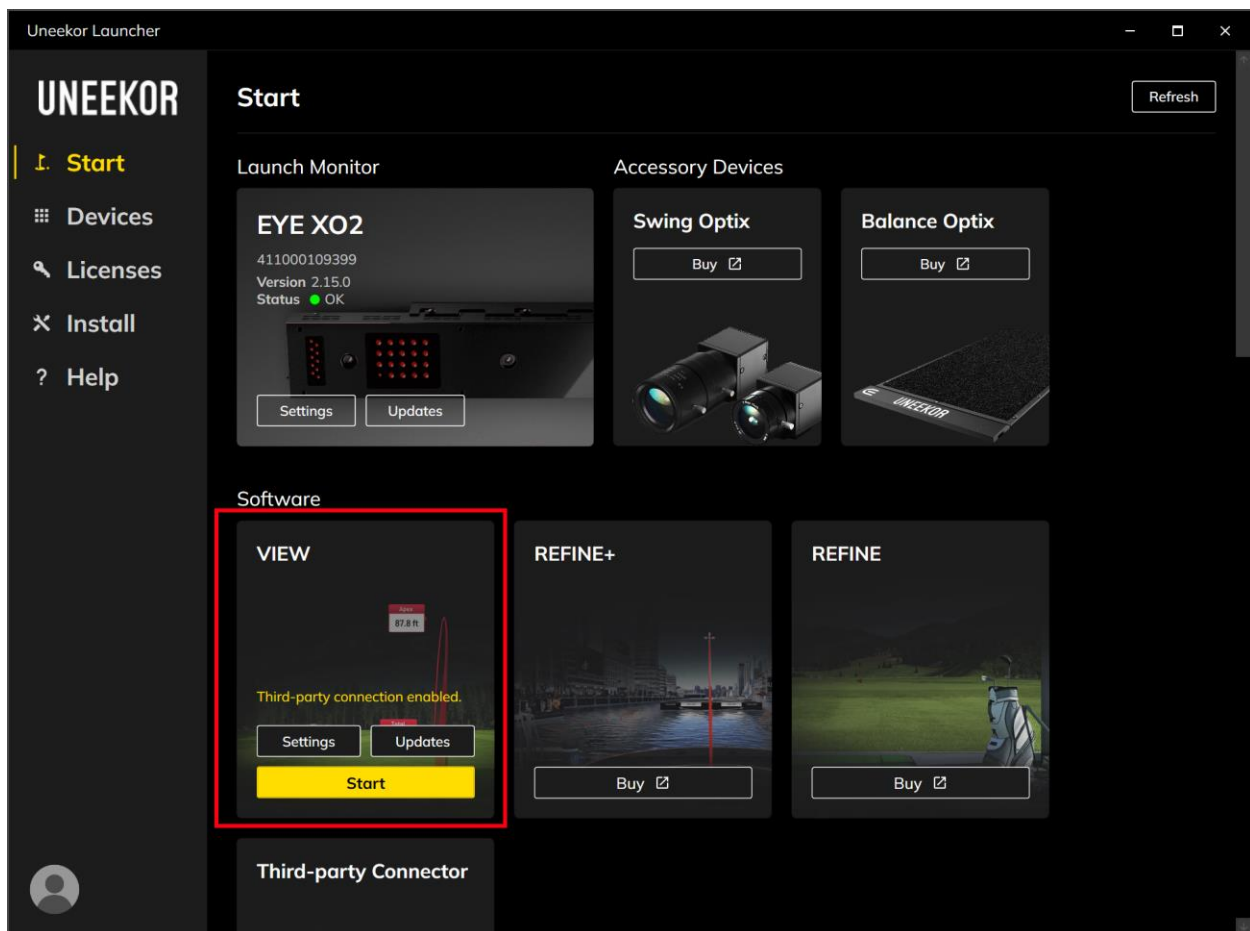
you need to change some things later on to get the right things displaying on the correct screens. See the troubleshooting section for information

Now, log on to the computer with the supplied username/password.

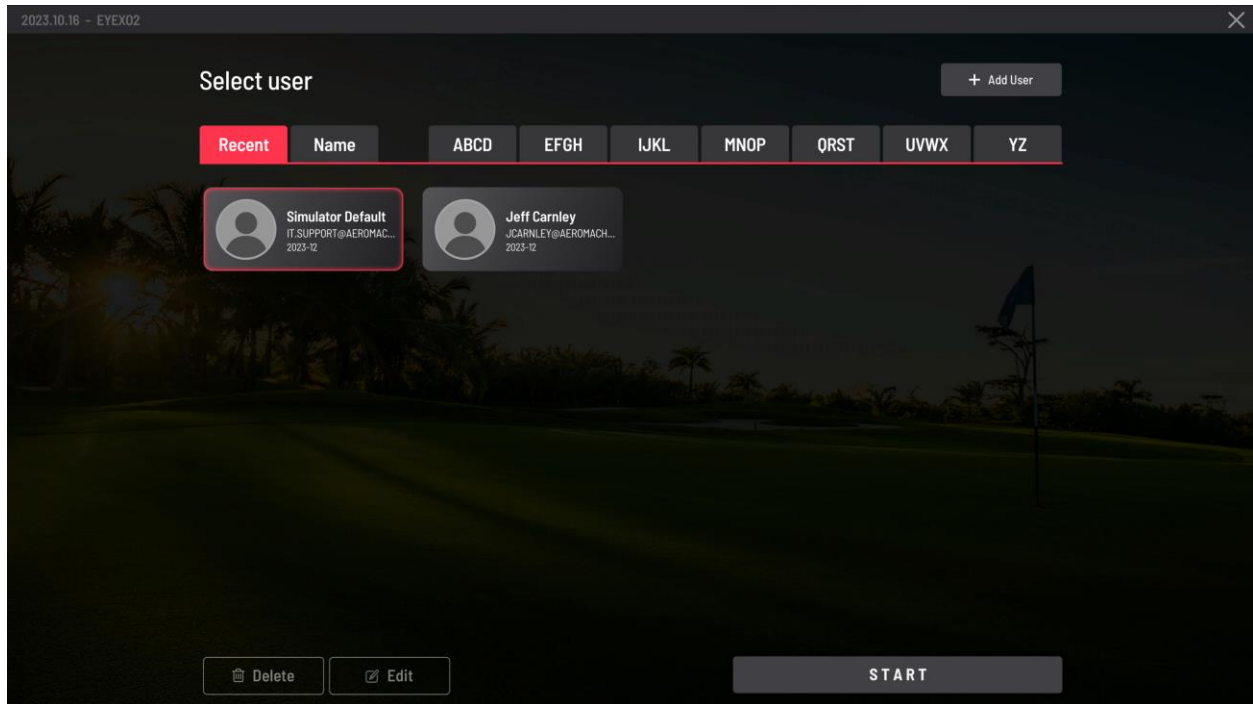
Simulator Software

On the desktop there are three shortcuts in the middle of the screen – Uneekor, TGC2019, and Roxor. For the Driving Range, we are only concerned with the Uneekor shortcut. Double-click the Uneekor shortcut to launch the Uneekor software.

Once the software loads up, locate the “View” tile and press the “Start” button in that tile to launch the “View” software. This should load on the Side TV.



The Simulator Default profile can be used, but if you would like to track your own statistics, you will need to create a Uneekor account. You can create a free account here – <https://my.uneekor.com/register> If you created an account, click the Add User button and login. If you didn't create an account, just select the Simulator Default profile and click Start.




Once logged in to your preferred profile, you are almost ready to hit the range. On the left side of the screen you'll see your session statistics. To the right of that is a menu column with various buttons to display shots and statistics on the screen. For practice, generally you'll want to use the "Club" display on this screen. Click the "Club" button.



From here you can see the various statistics for your last shot. The bottom right window has a video replay of the club face impacting the ball. You can press the "Play" button to rewatch it.

Finally, we need to click the "Multi-Instance" button to bring up a second "View" window.

This button looks like a square with an arrow pointing out of it.  This should pop up the driving range view on the projector screen. If it pops up on the side tv, just drag the window over to the projector screen and maximize it.

You should now have the driving range display on the Projector Screen and the stats display on the Side TV. At this point you are ready to start hitting shots. You can cycle through the various screens on the side tv to view different shot statistics.